

A PROJECT BY- LODHI BUILDER & DEVELOPER PVT. LTD.

“WE ALWAYS DELIVER MORE THAN EXPECTED”

Our Executions

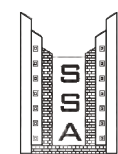


MADAN MAHARAJ'S
KASTURI
TRADE CENTER
Commercial Complex In Front Of
KAROND MANDI

SITE ADDRESS: IN FRONT OF KAROND MANDI , BHANPUR, BHOPAL,



CORPORATE OFFICE:
10/2 Chittod Complex, Zone-I, M.P. Nagar, Bhopal
Phone : +91 755 4241999, 98930 90545
E-mail : lodhibuilderbpl@gmail.com
Website : www.lodhibuilder.com



Architects -
S.S. & Associates
Architects & Engineers
B-59, Dr Govind Narayan Singh
Model Town, Chuna Bhatti, Bhopal
Ph.: 0755-4273778, Mob: 9644007700
e-mail: ssandassociatesbpl@gmail.com
ssandassociates1997@gmail.com



One more step towards success.

MADAN MAHARAJ'S
KASTURI
TRADE CENTER
Commercial Complex In Front Of
KAROND MANDI



ENJOY THE PRIVILEGE OF PREMIUM COMMERCIAL SPACE



MADAN MAHARAJ'S
KASTURI
TRADECENTER
Commercial Complex In Front Of
KAROND MANDI

MALL LIKE SHOPPING EXPERIENCE

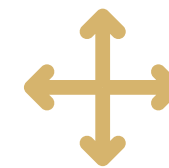
Located at Karond Mandi, The commercial space attracts high network individuals to its merchandise. The double heights entrance gives a royal welcome to continuous footfalls. Glittering spaces state of the art management and spacious parking will ensure higher returns on your business investment. Relocate to this prestigious address that matches your brand and business and convert all the costumers attention into profits.



Located AT Karond Mandi
(Bhanpur)



100%
24x7, Power backup
in Common area



Development spread over
2 lac sq.ft. approx.
3.7 acre area



Best in class maintenance
and housekeeping.



Multiple entry & exit, provision
for ATM kiosks, help
desk & information centre



Four elevators (10 pax capacity each)
retail cum entertainment zone
and including one service elevator



Latest building management system
with CCTVs, smoke detectors and
firefighting system / sprinklers
as per NBC/Fire approval



Over 500
car parking space at
2 levels

**MADAN MAHARAJ'S
 KASTURI
 TRADECENTER**
 Commercial Complex In Front Of
 KAROND MANDI

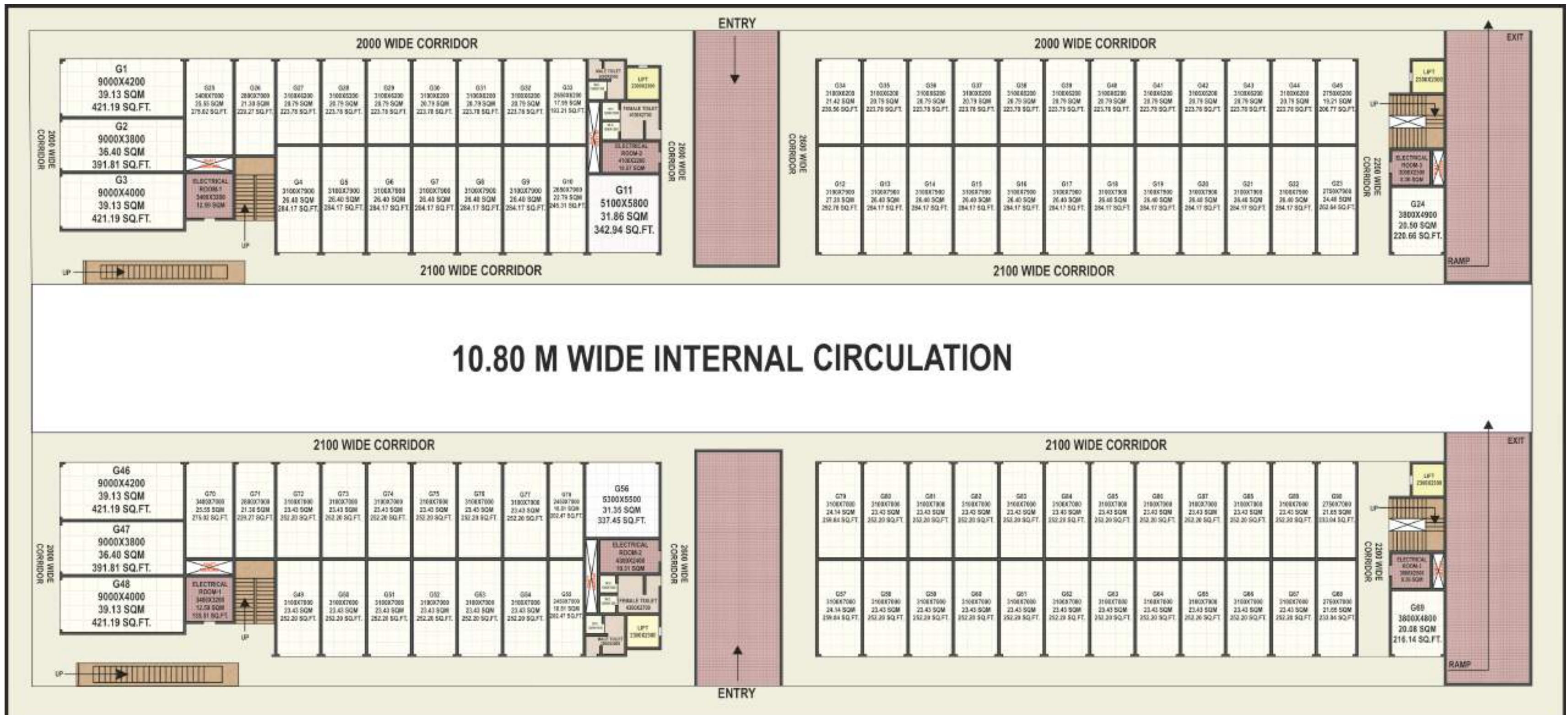


PROJECT AMENITIES AND FEATURES

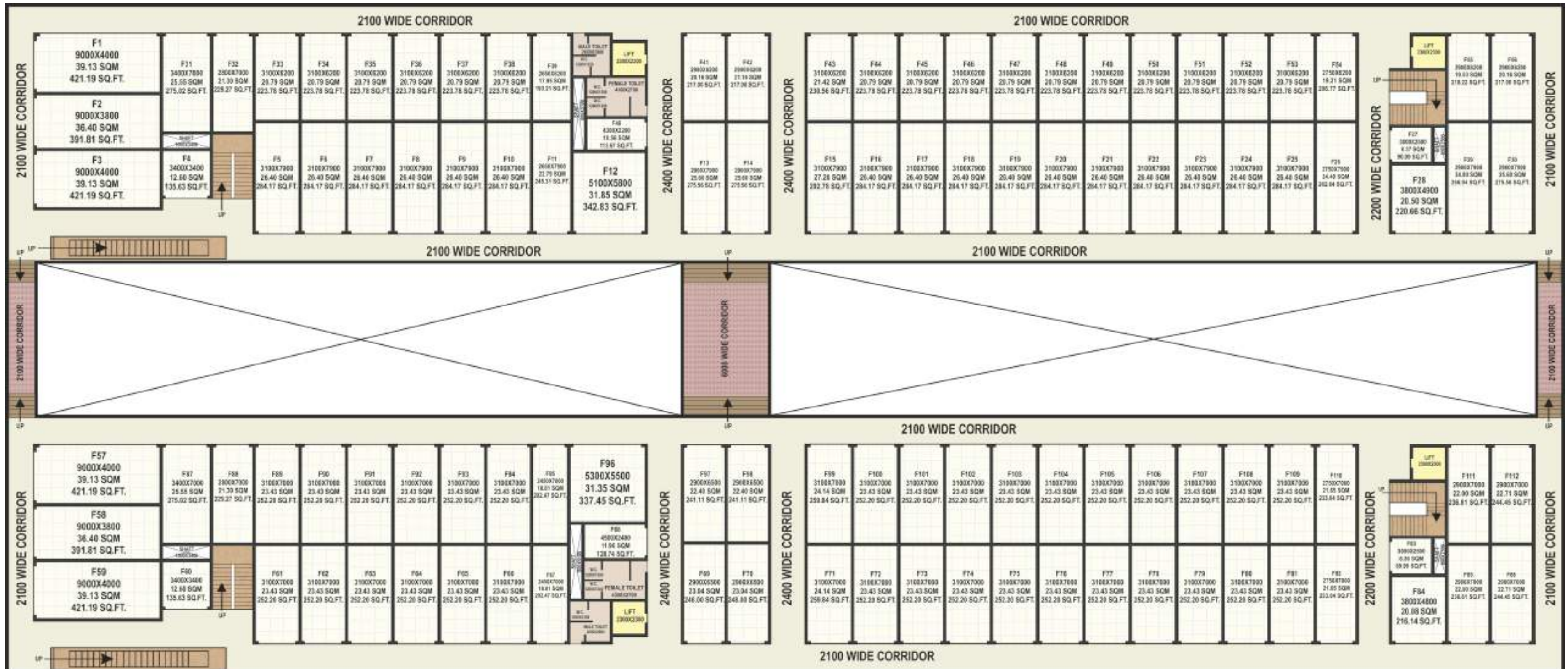
- Centrally located business place of Bhopal city especially for garments & jewellery and FMCG Sector.
- 'A' class construction with premium quality steel & cement.
- Magnificent building elevation.
- Huge central atrium for inter connectivity.
- Pollution free and soothing business environment.
- Four branded automatic lifts(10 pax capacity each) with power back up and two comfortable escalator staircase.
- Ample parking space.
- Adequate water supply through borewell and overhead tank to on demand shop and offices.
- Fire fighting systems as per norms.
- Rain water harvesting.
- False ceiling & lighting in common area.
- Common toilets with wonderful finish.
- Cold and hot drinking water with RO System in Common area.
- Common seating area with children play zone.
- Beautiful landscape with temple.



GROUND FLOOR PLAN

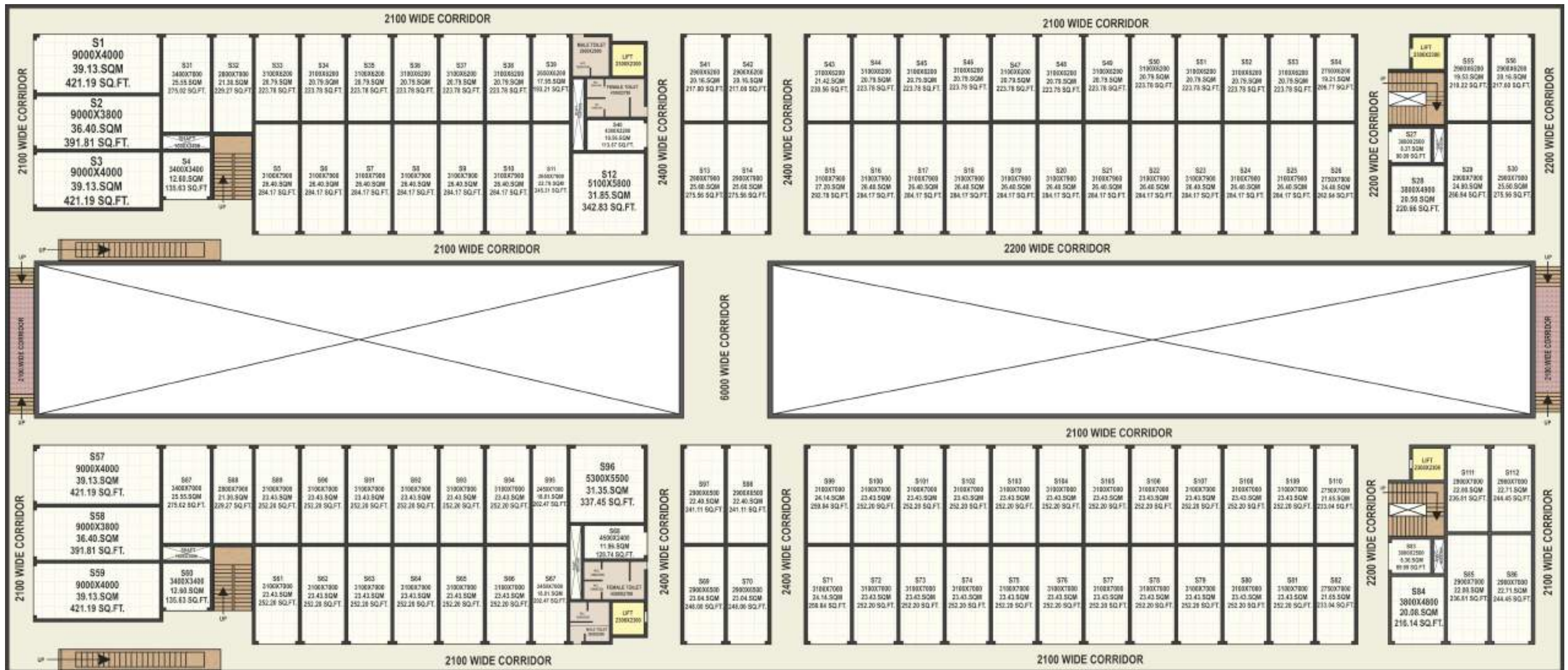


FIRST FLOOR PLAN



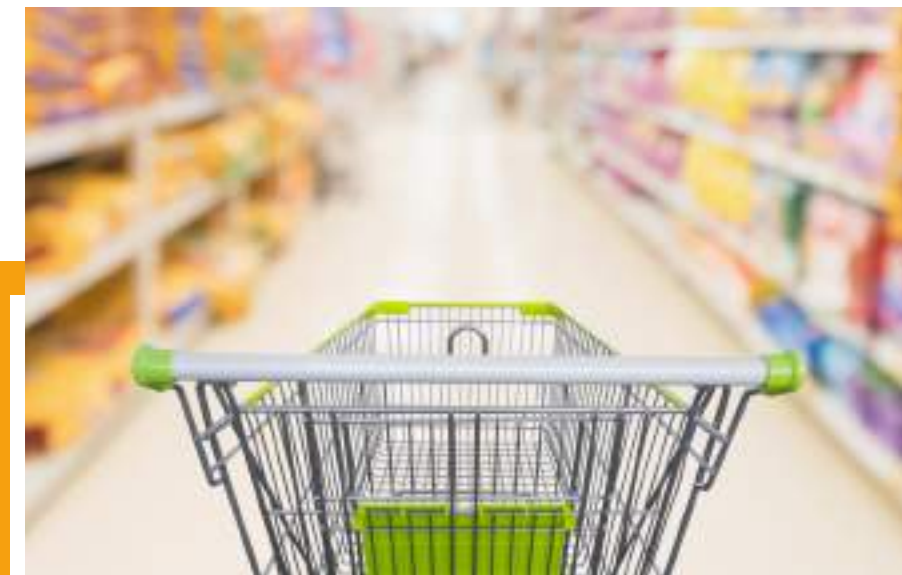
★ ★ ★
MADAN MAHARAJ'S
KASTURI
TRADECENTER
 Commercial Complex In Front Of
 KAROND MANDI

SECOND FLOOR PLAN





LAYOUT PLAN



LOCATION MAP

**MADAN MAHARAJ'S
 KASTURI
 TRADECENTER**
 Commercial Complex In Front Of
 KAROND MANDI



**CATCHMENT OF
 OVER 3 LAC FAMILIES
 WITHIN 6 KM**

0-5 MINUTES

1. DIG BUNGLOW
2. BEST PRICE
3. CHOLA
4. PEOPLE'S MALL

05 -10 MINUTES

5. KAROND SQUARE
6. PEOPLE'S COLLEGE
7. BUS STAND
8. RAILWAY STATION

10 -15 MINUTES

9. MINAL RESIDENCY
10. AIRPORT